



FLOMAX 8 HYDRAULIC

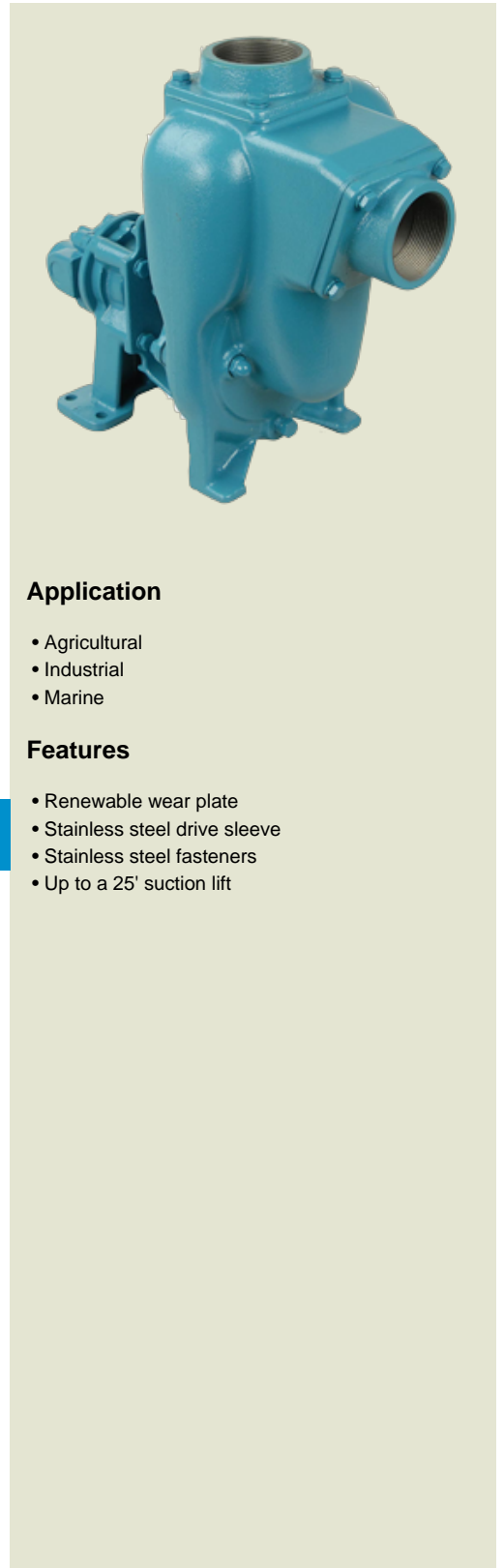
2" x 2" Self Priming Centrifugal Pump

FLOMAX® 8 hydraulic self-priming centrifugal pumps are capable of creating vacuum sufficient to lift liquids from heights up to 25 feet above the source. Once primed, the pump's built in flapper valve will maintain a full column of liquid in the suction line.

A FLOMAX® 8 hydraulic pump is available with a .37, .45 or .58 cubic inch displacement gerotor motors. They are capable of hydraulic flows ranging from 5 GPM to 12 GPM and hydraulic pressures ranging from 900 PSI to 1850 PSI.

Standard features include stainless steel drive sleeve, stainless steel fasteners, renewable wearplate, and a semi-open dynamically balanced impeller. Options include double grease lubricated seals, stainless steel impeller and seals for all types of abrasive and/or corrosive services.

The FLOMAX® series of pumps are commonly used in Industrial, Agricultural and Marine applications, such as: Bilge Pumps, Auxiliary Fire Pumps, Ballast Transfer Pumps, Washdown Pumps, Fertilizer and Pesticide Pumps, Applicators & Sprayers, Blending Pumps, Nurse Tanks, Bulk Transfer Pumps and much more.



Application

- Agricultural
- Industrial
- Marine

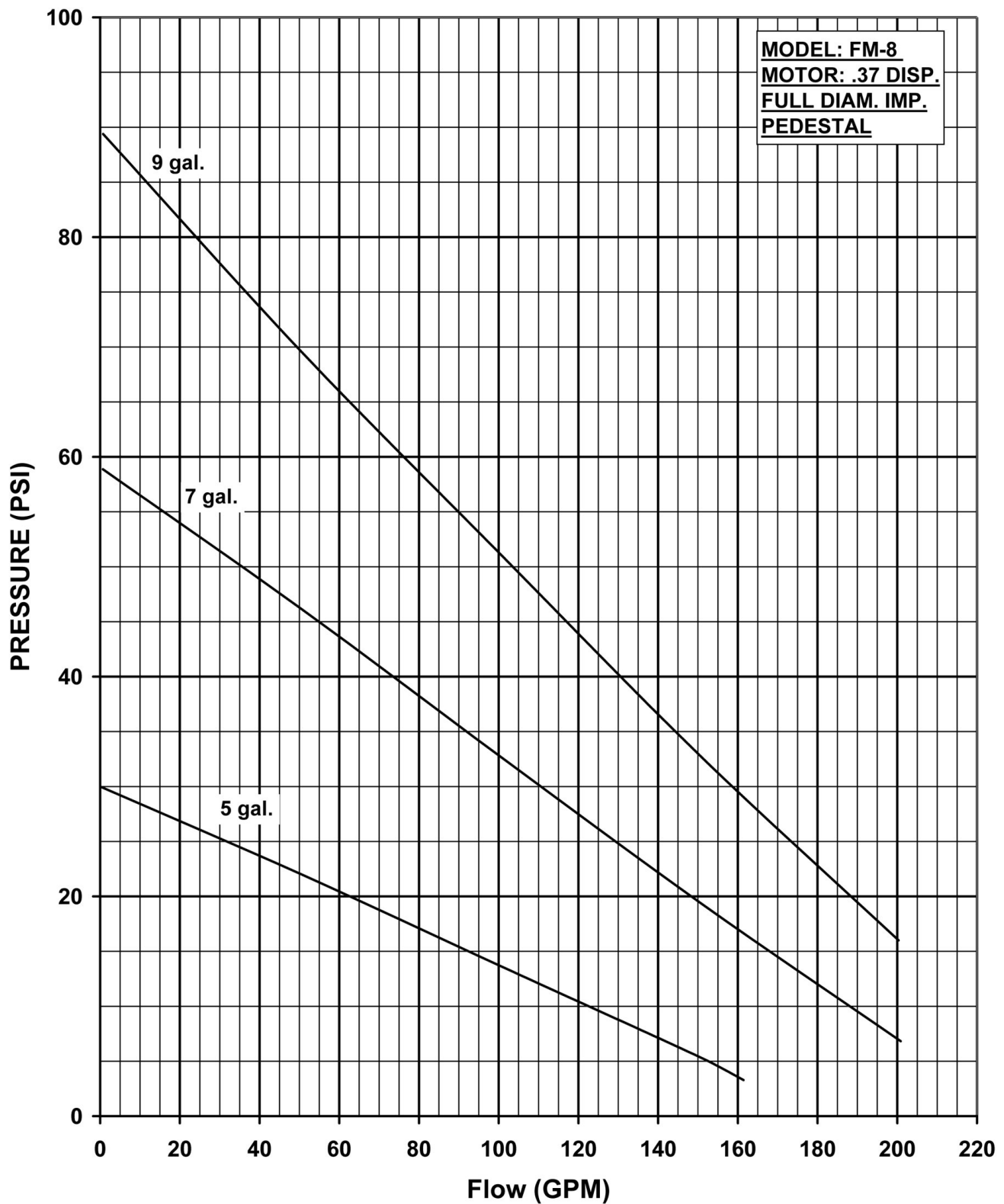
Features

- Renewable wear plate
- Stainless steel drive sleeve
- Stainless steel fasteners
- Up to a 25' suction lift

SPECIFICATIONS:

| | |
|---------------------------|---|
| Suction And Discharge | 2" x 2" NPT ports |
| Materials Of Construction | 316 stainless steel, Aluminum, Bronze, Cast iron |
| Flow | Up to 200 GPM |
| Head Feet | Up to 275' |
| Impeller | 5.0" semi-open |
| Drive Options | Hydraulic motor .37 cu. in., Hydraulic motor .45 cu. in., Hydraulic motor .58 cu. in. |
| Seal | Special seal material combinations available (consult factory), Standard carbon / ceramic / Viton |
| Hydraulic Fluid Flow | Up to 12 GPM |
| Psi | Up to 120 |
| Max Solid Size | .56" diameter |
| Hydraulic Motor | Gerotor |
| Options | Hydraulic motors with flow control |
| Hydraulic System Pressure | Up to 1900 psi |

FLOMAX 8 HYDRAULIC



| OIL FLOW | SHUT OFF | 20 | 40 | 60 | 80 | 100 | 120 | 140 | 160 | 180 | 200 | MAX. HYD. OIL PRESS. REQ. |
|----------|----------|--------|--------|--------|--------|--------|--------|--------|--------|--------|--------|---------------------------|
| | 0 GPM | GPM | GPM | GPM | GPM | GPM | GPM | GPM | GPM | GPM | GPM | |
| 5 GPM | 30 PSI | 27 PSI | 24 PSI | 21 PSI | 17 PSI | 14 PSI | 11 PSI | 7 PSI | 4 PSI | | | 920 PSI |
| 7 GPM | 59 PSI | 54 PSI | 49 PSI | 43 PSI | 37 PSI | 33 PSI | 27 PSI | 22 PSI | 17 PSI | 12 PSI | 7 PSI | 1460 PSI |
| 9 GPM | 89 PSI | 82 PSI | 74 PSI | 66 PSI | 57 PSI | 49 PSI | 42 PSI | 38 PSI | 29 PSI | 23 PSI | 17 PSI | 1850 PSI |

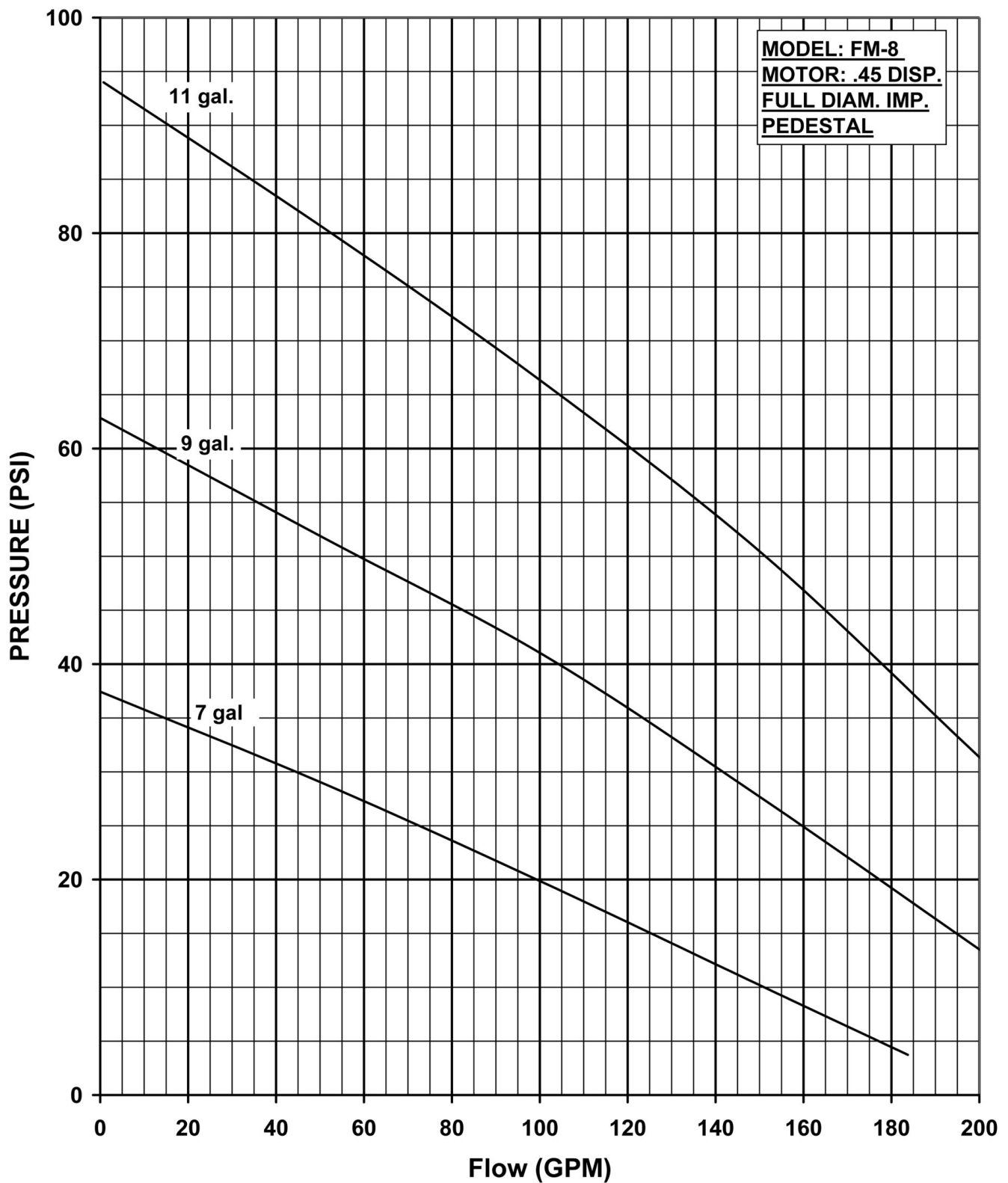
CN 7090-S



34800 BENNETT - FRASER, MI 48026-1686
 (586) 293-8240 - FAX (586) 293-8469
 (800) 563-8006 - www.mppumps.com

FLOMAX 8 HYDRAULIC

FLOMAX 8 HYDRAULIC



| OIL FLOW | SHUT OFF | 20 | 40 | 60 | 80 | 100 | 120 | 140 | 160 | 180 | 200 | MAX. HYD. OIL PRESS. REQ. |
|----------|----------|--------|--------|--------|--------|--------|--------|--------|--------|--------|--------|---------------------------|
| | 0 GPM | GPM | GPM | GPM | GPM | GPM | GPM | GPM | GPM | GPM | GPM | |
| 7 GPM | 37 PSI | 34 PSI | 31 PSI | 27 PSI | 24 PSI | 20 PSI | 16 PSI | 13 PSI | 8 PSI | 4 PSI | | 900 PSI |
| 9 GPM | 62 PSI | 58 PSI | 54 PSI | 50 PSI | 46 PSI | 41 PSI | 36 PSI | 31 PSI | 25 PSI | 19 PSI | 14 PSI | 1400 PSI |
| 11 GPM | 94 PSI | 89 PSI | 83 PSI | 78 PSI | 72 PSI | 66 PSI | 60 PSI | 54 PSI | 46 PSI | 37 PSI | 29 PSI | 1920 PSI |

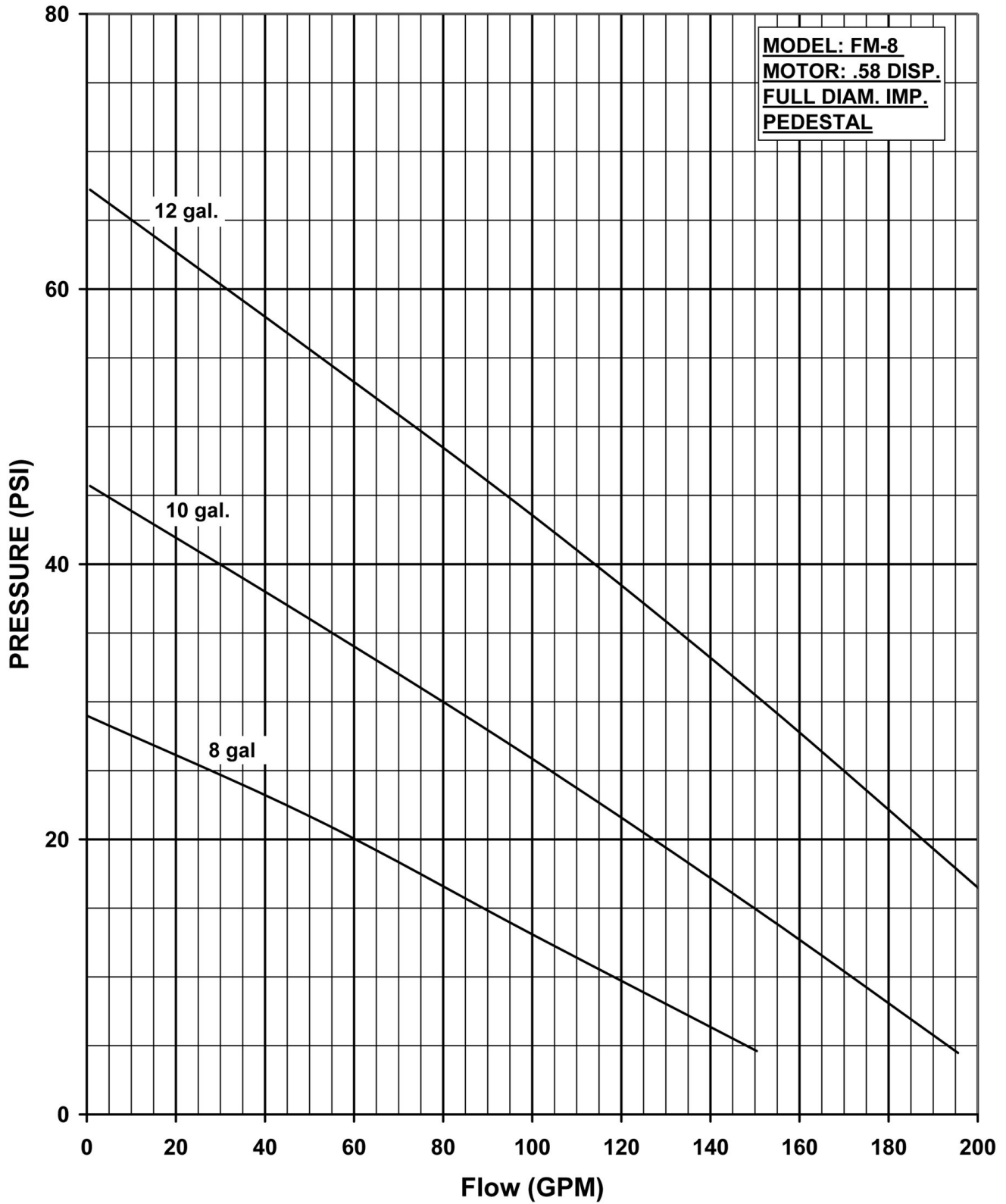
CN 7091-S



34800 BENNETT - FRASER, MI 48026-1686
 (586) 293-8240 - FAX (586) 293-8469
 (800) 563-8006 - www.mppumps.com

FLOMAX 8 HYDRAULIC

FLOMAX 8 HYDRAULIC



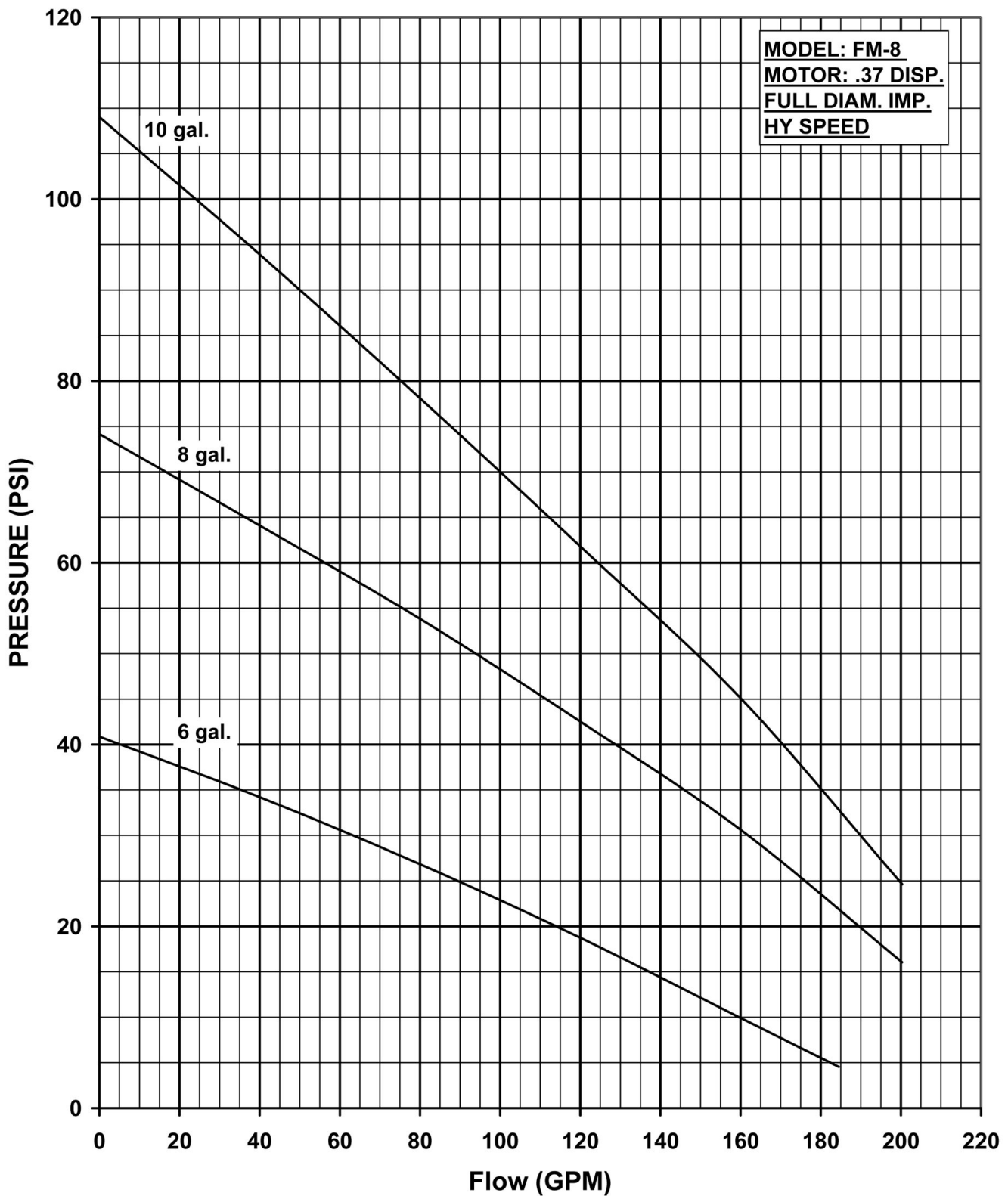
| OIL FLOW | SHUT OFF | 20 | 40 | 60 | 80 | 100 | 120 | 140 | 160 | 180 | 200 | MAX. HYD. OIL PRESS. REQ. |
|----------|----------|--------|--------|--------|--------|--------|--------|--------|--------|--------|--------|---------------------------|
| | 0 GPM | GPM | GPM | GPM | GPM | GPM | GPM | GPM | GPM | GPM | GPM | |
| 8 GPM | 29 PSI | 26 PSI | 23 PSI | 20 PSI | 16 PSI | 13 PSI | 10 PSI | 6 PSI | | | | 650 PSI |
| 10 GPM | 46 PSI | 42 PSI | 38 PSI | 34 PSI | 30 PSI | 26 PSI | 22 PSI | 17 PSI | 13 PSI | 8 PSI | | 900 PSI |
| 12 GPM | 67 PSI | 63 PSI | 58 PSI | 54 PSI | 48 PSI | 43 PSI | 38 PSI | 33 PSI | 27 PSI | 23 PSI | 17 PSI | 1300 PSI |

CN 7092-S



34800 BENNETT - FRASER, MI 48026-1686
 (586) 293-8240 - FAX (586) 293-8469
 (800) 563-8006 - www.mppumps.com

FLOMAX 8 HYDRAULIC



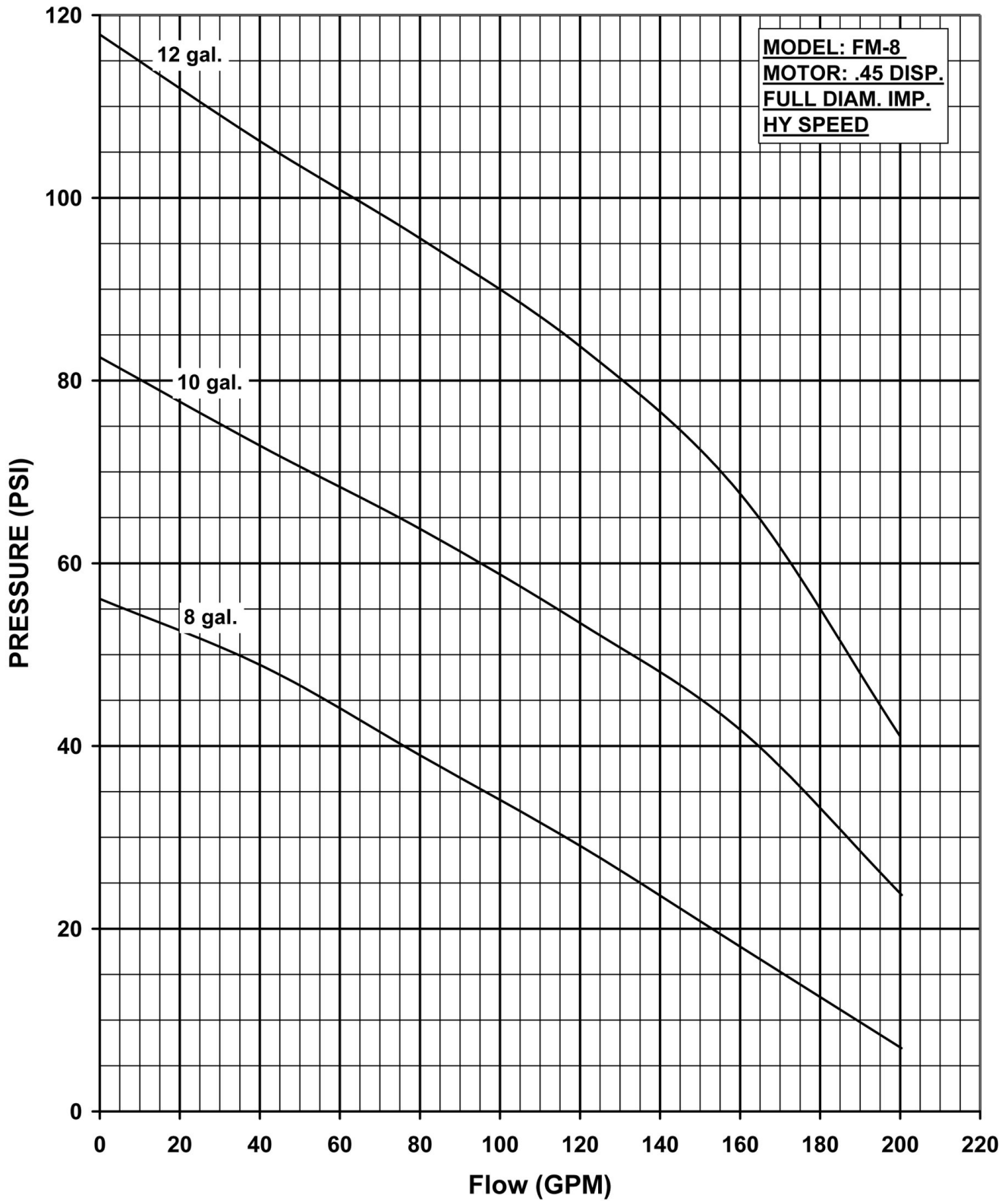
| OIL FLOW | SHUT OFF | 20 | 40 | 60 | 80 | 100 | 120 | 140 | 160 | 180 | 200 | MAX. HYD. OIL PRESS. REQ. |
|----------|----------|---------|--------|--------|--------|--------|--------|--------|--------|--------|--------|---------------------------|
| | 0 GPM | GPM | GPM | GPM | GPM | GPM | GPM | GPM | GPM | GPM | GPM | |
| 6 GPM | 41 PSI | 38 PSI | 34 PSI | 31 PSI | 27 PSI | 22 PSI | 18 PSI | 14 PSI | 10 PSI | 5 PSI | | 1250 PSI |
| 8 GPM | 74 PSI | 69 PSI | 64 PSI | 59 | 54 PSI | 48 PSI | 43 PSI | 37 PSI | 31 PSI | 24 PSI | 16 PSI | 1950 PSI |
| 10 GPM | 109 PSI | 102 PSI | 94 PSI | 86 PSI | 78 PSI | 70 PSI | 62 PSI | 54 PSI | 45 PSI | 35 PSI | 25 PSI | 2350 PSI |

CN 7093-S



34800 BENNETT - FRASER, MI 48026-1686
 (586) 293-8240 - FAX (586) 293-8469
 (800) 563-8006 - www.mppumps.com

FLOMAX 8 HYDRAULIC



| OIL FLOW | SHUT OFF | 20 | 40 | 60 | 80 | 100 | 120 | 140 | 160 | 180 | 200 | MAX. HYD. OIL PRESS. REQ.. |
|----------|----------|---------|---------|---------|--------|--------|--------|--------|--------|--------|--------|----------------------------|
| | 0 GPM | GPM | GPM | GPM | GPM | GPM | GPM | GPM | GPM | GPM | GPM | |
| 8 GPM | 53 PSI | 49 PSI | 44 PSI | 41 PSI | 37 PSI | 33 PSI | 28 PSI | 24 PSI | 18 PSI | 14 PSI | 8 PSI | 1250 PSI |
| 10 GPM | 82 PSI | 77 PSI | 73 PSI | 68 PSI | 64 PSI | 59 PSI | 54 PSI | 48 PSI | 42 PSI | 34 PSI | 24 PSI | 1850 PSI |
| 12 GPM | 118 PSI | 110 PSI | 105 PSI | 100 PSI | 96 PSI | 90 PSI | 83 PSI | 76 PSI | 67 PSI | 54 PSI | 37 PSI | 2450 PSI |

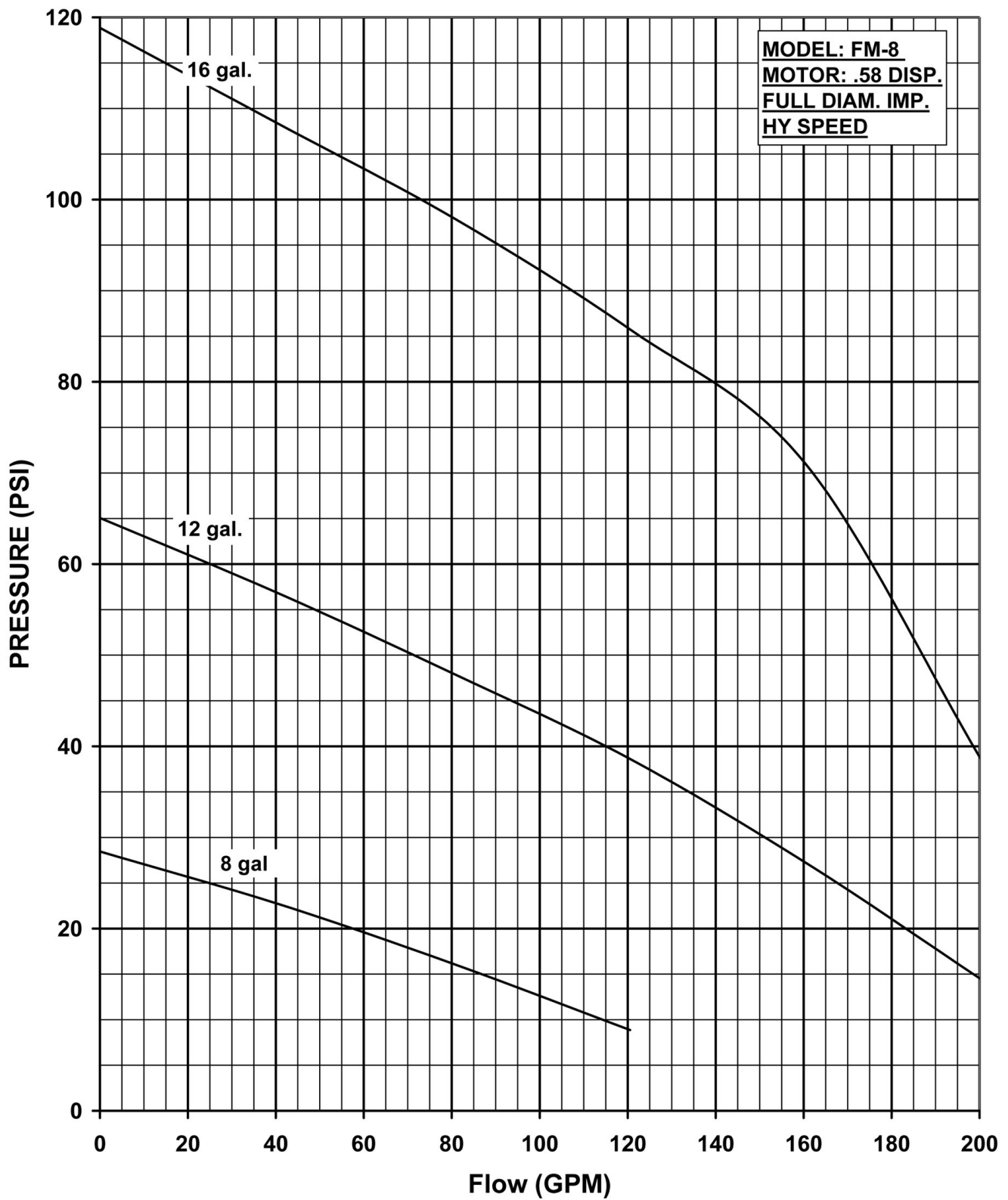
CN 7094-S



34800 BENNETT - FRASER, MI 48026-1686
 (586) 293-8240 - FAX (586) 293-8469
 (800) 563-8006 - www.mppumps.com

FLOMAX 8 HYDRAULIC

FLOMAX 8 HYDRAULIC



| OIL FLOW | SHUT OFF | 20 | 40 | 60 | 80 | 100 | 120 | 140 | 160 | 180 | 200 | MAX. HYD. OIL PRESS. REQ.. |
|----------|----------|---------|---------|---------|--------|--------|--------|--------|--------|--------|--------|----------------------------|
| | 0 GPM | GPM | GPM | GPM | GPM | GPM | GPM | GPM | GPM | GPM | GPM | |
| 8 GPM | 28 PSI | 26 PSI | 23 PSI | 20 PSI | 16 PSI | 13 PSI | 9 PSI | | | | | 650 PSI |
| 12 GPM | 65 PSI | 61 PSI | 56 PSI | 53 PSI | 48 PSI | 43 PSI | 38 PSI | 44 PSI | 27 PSI | 21 PSI | 15 PSI | 1250 PSI |
| 16 GPM | 119 PSI | 113 PSI | 106 PSI | 102 PSI | 98 PSI | 93 PSI | 86 PSI | 80 PSI | 72 PSI | 56 PSI | 39 PSI | 1950 PSI |

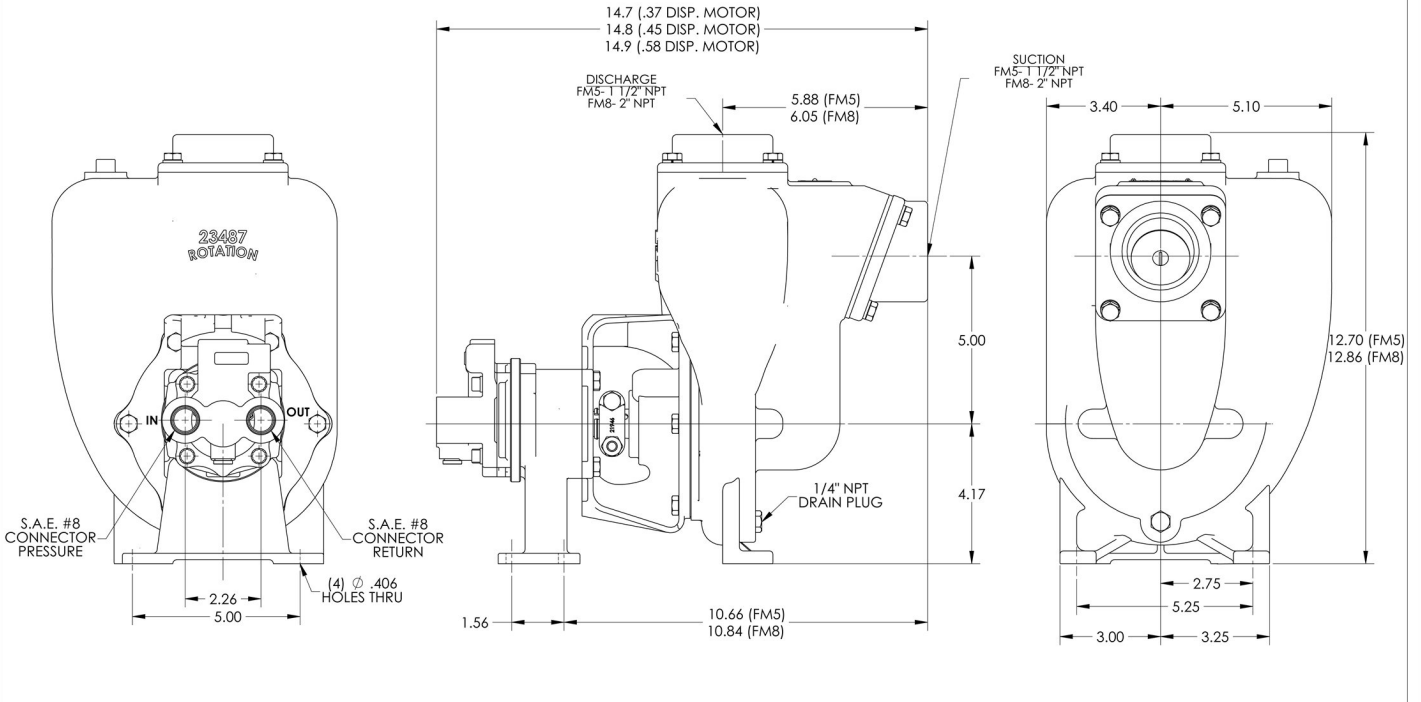
CN 7095-S



34800 BENNETT - FRASER, MI 48026-1686
 (586) 293-8240 - FAX (586) 293-8469
 (800) 563-8006 - www.mppumps.com

FLOMAX 8 HYDRAULIC

36588



NOTE: THIS DRAWING OR PRINT, PROPERTY OF MP PUMPS, INC. (MP PUMPS) CONTAINS PROPRIETARY AND CONFIDENTIAL INFORMATION. IT SHALL BE USED ONLY AS APPROVED BY MP PUMPS. SHALL NOT BE GIVEN TO OTHERS OR COPIED WITHOUT THE WRITTEN CONSENT OF MP PUMPS. RETURN TO MP PUMPS PROMPTLY WHEN REQUESTED.

| | | | | | | | | | | |
|-----|---|-------|----------|------|--|--|--|--|--|--|
| G | | | | | | | | | | |
| F | | | | | | | | | | |
| E | | | | | | | | | | |
| D | | | | | | | | | | |
| C | | | | | | | | | | |
| B | | | | | | | | | | |
| A | REPLACED W/IRON FLAPPER ASSEMBLY WITH EPDM FLAPPER ASSEMBLY E.C.O.# 1289 | K.G. | 08-22-13 | D.D. | | | | | | |
| REV | DESCRIPTION | DRAWN | DATE | EN | | | | | | |

UNLESS OTHERWISE NOTED
THIRD ANGLE PROJECTION

2 PLACE DIM = .000
3 PLACE DIM = .010
ANGULAR DIM ± 1°

DO NOT SCALE

MP PUMPS, INC.
FRASER, MICHIGAN 48026, U.S.A.

MATERIAL: CAST IRON ASTM A48 CLASS 25 OR ASTM A159 2500

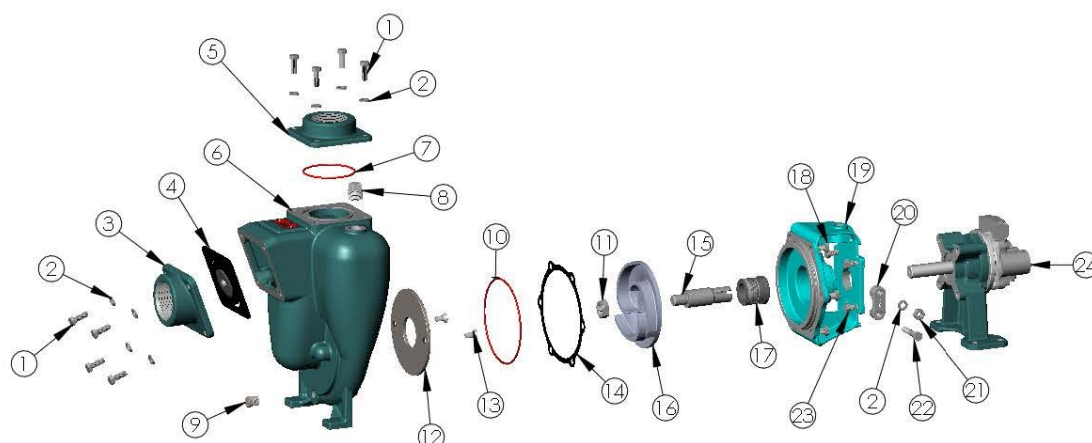
| | | | | | |
|------------------|-----------------------|-----------------|---------------|----------|-----------|
| DRAWN BY C.W. | DATE COMPI. 5-4-09 | APPROV. S.B. | SCALE FULL | MADE FOR | MADE FROM |
|------------------|-----------------------|-----------------|---------------|----------|-----------|

FLOMAX INSTALLATION

DRAWING NO 36588



34800 BENNETT - FRASER, MI 48026-1686
(586) 293-8240 - FAX (586) 293-8469
(800) 563-8006 - www.mppumps.com



| ITEM NO. | PART NO. | DESCRIPTION | QTY. | | ITEM NO. | PART NO. | DESCRIPTION | QTY. |
|----------|----------|----------------------------|------|---|----------|----------|---------------------------------------|------|
| 1 | 21242 | CAPSCREW - 5/16"-18 X 7/8" | 8 | | 15 | 22286 | DRIVE SLEEVE SS - 3/4 | 1 |
| 2 | 21238 | LOCKWASHER 5/16 | 16 | * | 16 | 22293 | IMPELLER C.I. - Ø5.0 | 1 |
| 3 | 22387 | SUCTION FLANGE- 2" NPT | 1 | * | 17 | 22273 | SEAL- VITON | 1 |
| * 4 | 23022 | FLAPPER ASY- BUNA | 1 | | 18 | 24965 | CAPSCREW- 5/16"-18 X 3/4" | 6 |
| 5 | 22311 | DISCHARGE FLANGE- 2" NPT | 1 | | 19 | 22247 | ADAPTOR | 1 |
| * 6 | 22251 | HOUSING C.C. | 1 | | 20 | 21946 | CLAMP- 3/4 SL | 2 |
| 7 | 37141 | O-RING - VITON | 1 | | 21 | 21284 | HEX NUT- 5/16"-18 | 2 |
| 8 | 37140 | 1/2 NPT FILL PLUG S.S. | 1 | | 22 | 21264 | CAPSCREW- 5/16"-18 X 1 3/4" | 2 |
| * 9 | 21267 | PIPE PLUG STL. - 1/4" NPT | 1 | | 23 | 24965 | CAPSCREW S.S. - 5/16-18 X 3/4" PATCH | 6 |
| 10 | 34555 | O-RING - VITON | 1 | | 24 | 35995 | .22 DISP. HYD. PEDESTAL ASY NOT SHOWN | |
| * 11 | 22655 | JAM NUT S.S.- 5/8"-18 | 1 | | | 36447 | .37 DISP. HYD. PEDESTAL ASY | 1 |
| 12 | 22260 | WEAR PLATE | 1 | | | 35996 | .45 DISP. HYD. PEDESTAL ASY NOT SHOWN | |
| 13 | 37137 | SCREW SS 5/16"-18 X .62 | 2 | | | 36448 | .58 DISP. HYD. PEDESTAL ASY NOT SHOWN | |
| 14 | 22255 | GASKET NI-2035 | 1 | | | | | |

* SUGGESTED REPLACEMENT PARTS

** COMPATIBLE FOR KEROSENE, JET A/8 & GASOLINE