



# FLOMAX 5 HYDRAULIC

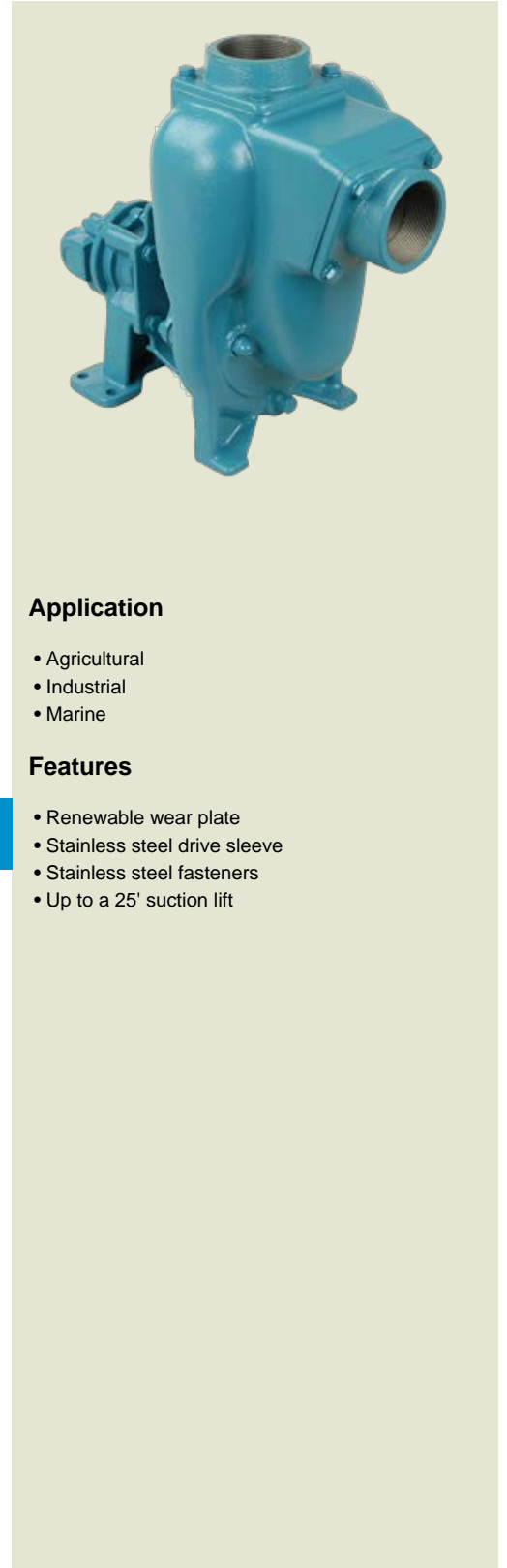
## 1-1/2" x 1-1/2" Self Priming Centrifugal Pump

FLOMAX® 5 hydraulic self-priming centrifugal pumps are capable of creating vacuum sufficient to lift liquids from heights up to 25 feet above the source. Once primed, the pump's built in flapper valve will maintain a full column of liquid in the suction line.

A FLOMAX® 5 hydraulic pump is available in .22, .37 or .45 cubic inch displacement gerotor motors. They are capable of hydraulic flows ranging from 4 GPM to 11 GPM and hydraulic pressures ranging from 700 PSI to 1950 PSI.

Standard features include stainless steel drive sleeve, stainless steel fasteners, renewable wear plate, and a semi-open dynamically balanced impeller. Options include double grease lubricated seals, stainless steel impeller and seals for all types of abrasive and/or corrosive services.

The FLOMAX® series of pumps are commonly used in Industrial, Agricultural and Marine applications, such as: Bilge Pumps, Auxiliary Fire Pumps, Ballast Transfer Pumps, Washdown Pumps, Fertilizer and Pesticide Pumps, Applicators & Sprayers, Blending Pumps, Nurse Tanks, Bulk Transfer Pumps and much more.



### Application

- Agricultural
- Industrial
- Marine

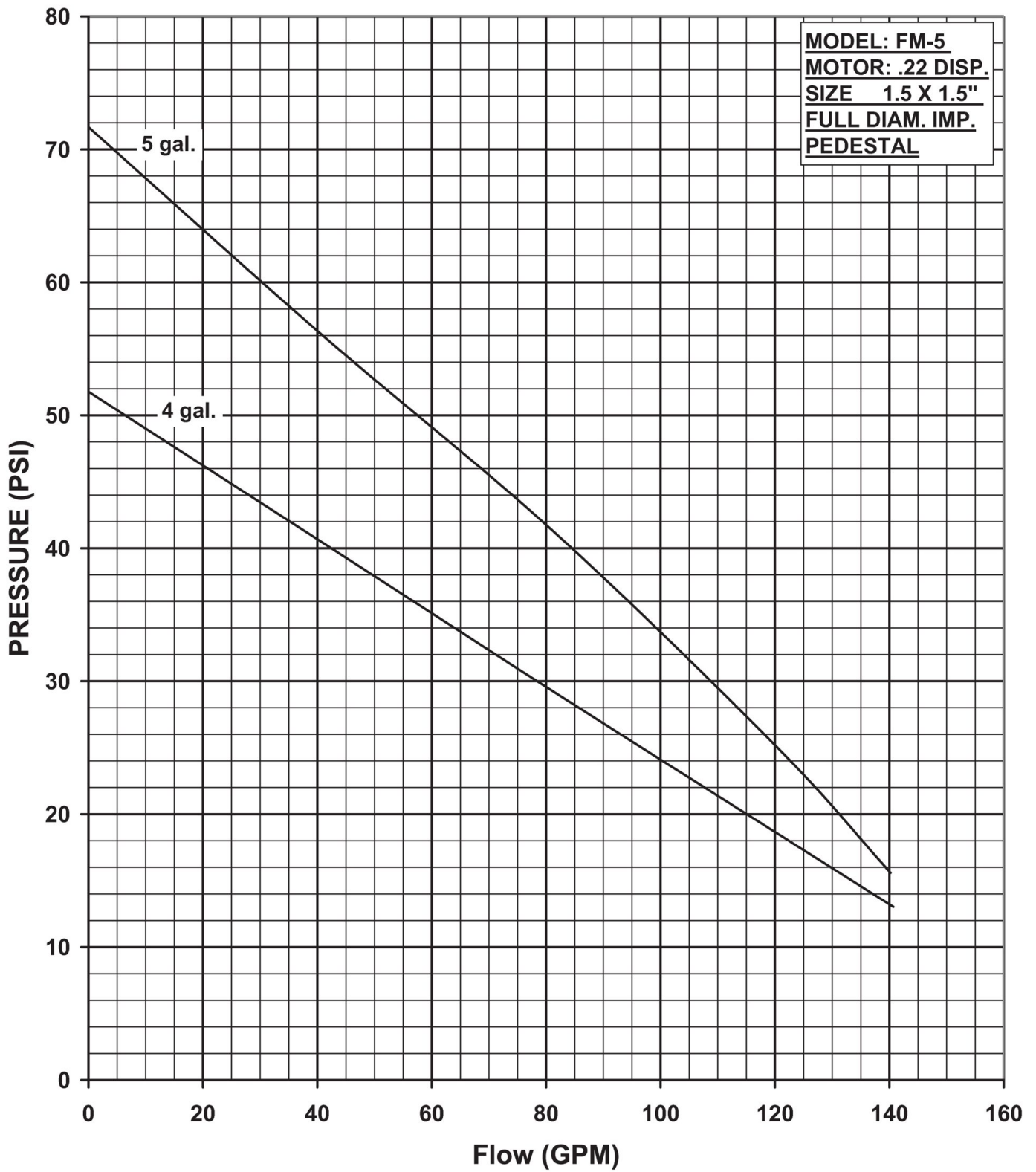
### Features

- Renewable wear plate
- Stainless steel drive sleeve
- Stainless steel fasteners
- Up to a 25' suction lift

## SPECIFICATIONS:

|                           |   |
|---------------------------|---|
| Suction And Discharge     | 1.5" x 1.5" NPT ports   |
| Materials Of Construction | Aluminum, Bronze, Cast iron   |
| Flow                      | Up to 175 GPM   |
| Head Feet                 | Up to 230'  |
| Impeller                  | 5.0" semi-open  |
| Drive Options             | Hydraulic motor .22 cu. in, Hydraulic motor .37 cu. in., Hydraulic motor .45 cu. in.              |
| Seal                      | Special seal material combinations available (consult factory), Standard carbon / ceramic / Viton |
| Max Solid Size            | .56" diameter   |
| Hydraulic Fluid Flow      | Up to 11 GPM  |
| Hydraulic System Pressure | Up to 2550 psi  |
| Hydraulic Motor           | Gerotor   |
| Psi                       | Up to 100   |

# FLOMAX 5 HYDRAULIC



| OIL FLOW | SHUT OFF | 20     | 40     | 60     | 80     | 100    | 120    | 140    | MAX. HYD. OIL |
|----------|----------|--------|--------|--------|--------|--------|--------|--------|---------------|
|          | 0 GPM    | GPM    | GPM    | GPM    | GPM    | GPM    | GPM    | GPM    | PRESS REQ.    |
| 5 GPM    | 72 PSI   | 64 PSI | 56 PSI | 49 PSI | 42 PSI | 34 PSI | 25 PSI | 13 PSI | 2550 PSI      |
| 4 GPM    | 52 PSI   | 46 PSI | 41 PSI | 35 PSI | 29 PSI | 24 PSI | 18 PSI | 13 PSI | 2150 PSI      |
|          |          |        |        |        |        |        |        |        |               |

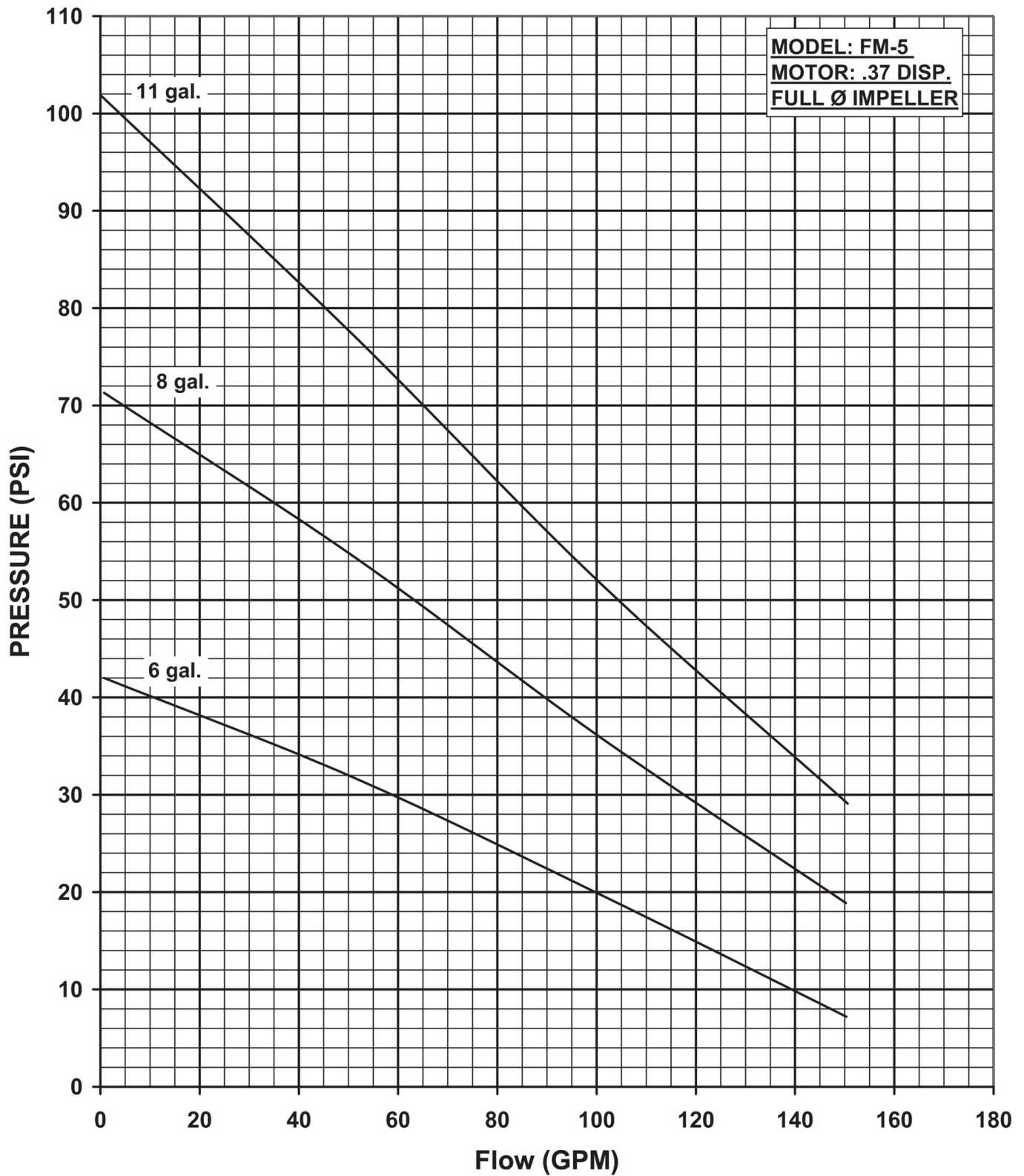
CN 7126-S



34800 BENNETT - FRASER, MI 48026-1686  
 (586) 293-8240 - FAX (586) 293-8469  
 (800) 563-8006 - www.mppumps.com

FLOMAX 5 HYDRAULIC

# FLOMAX 5 HYDRAULIC



| OIL FLOW | SHUT OFF<br>0 GPM | 10<br>GPM | 25<br>GPM | 40<br>GPM | 55<br>GPM | 70<br>GPM | 85<br>GPM | 100<br>GPM | 115<br>GPM | 130<br>GPM | 145<br>GPM | MAX. HYD. OIL<br>PRESS.REQ. |
|----------|-------------------|-----------|-----------|-----------|-----------|-----------|-----------|------------|------------|------------|------------|-----------------------------|
| 6 GPM    | 42 PSI            | 40 PSI    | 37 PSI    | 34 PSI    | 31 PSI    | 27 PSI    | 24 PSI    | 20 PSI     | 16 PSI     | 13 PSI     | 9 PSI      | 1180 PSI                    |
| 8 GPM    | 72 PSI            | 68 PSI    | 63 PSI    | 58 PSI    | 53 PSI    | 47 PSI    | 42 PSI    | 36 PSI     | 31 PSI     | 26 PSI     | 21 PSI     | 1610 PSI                    |
| 11 GPM   | 72 PSI            | 97 PSI    | 90 PSI    | 83 PSI    | 75 PSI    | 67 PSI    | 60 PSI    | 53 PSI     | 43 PSI     | 39 PSI     | 32 PSI     | 1950 PSI                    |

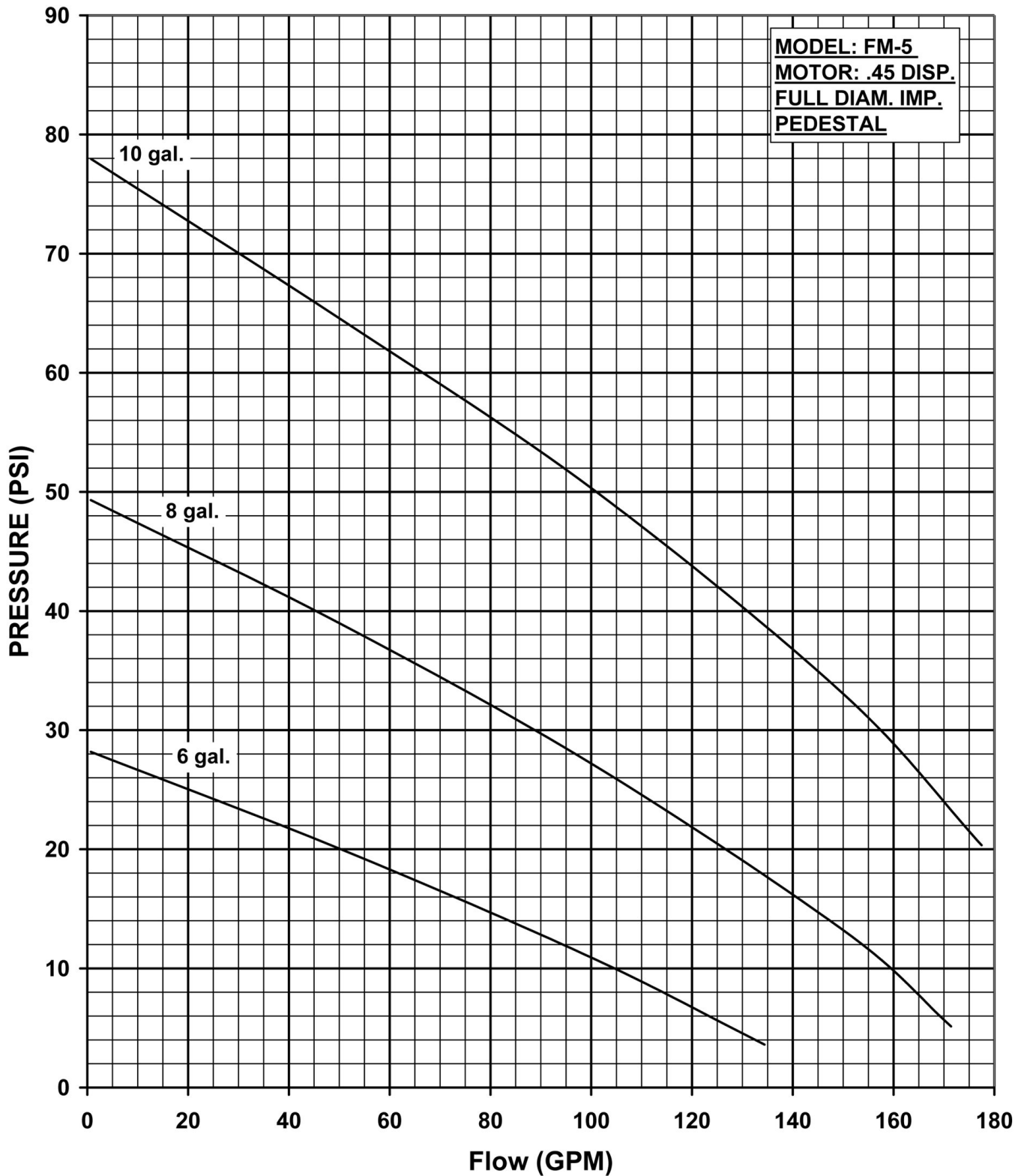
CN 7088-S



34800 BENNETT - FRASER, MI 48026-1686  
 (586) 293-8240 - FAX (586) 293-8469  
 (800) 563-8006 - www.mppumps.com

FLOMAX 5 HYDRAULIC

# FLOMAX 5 HYDRAULIC



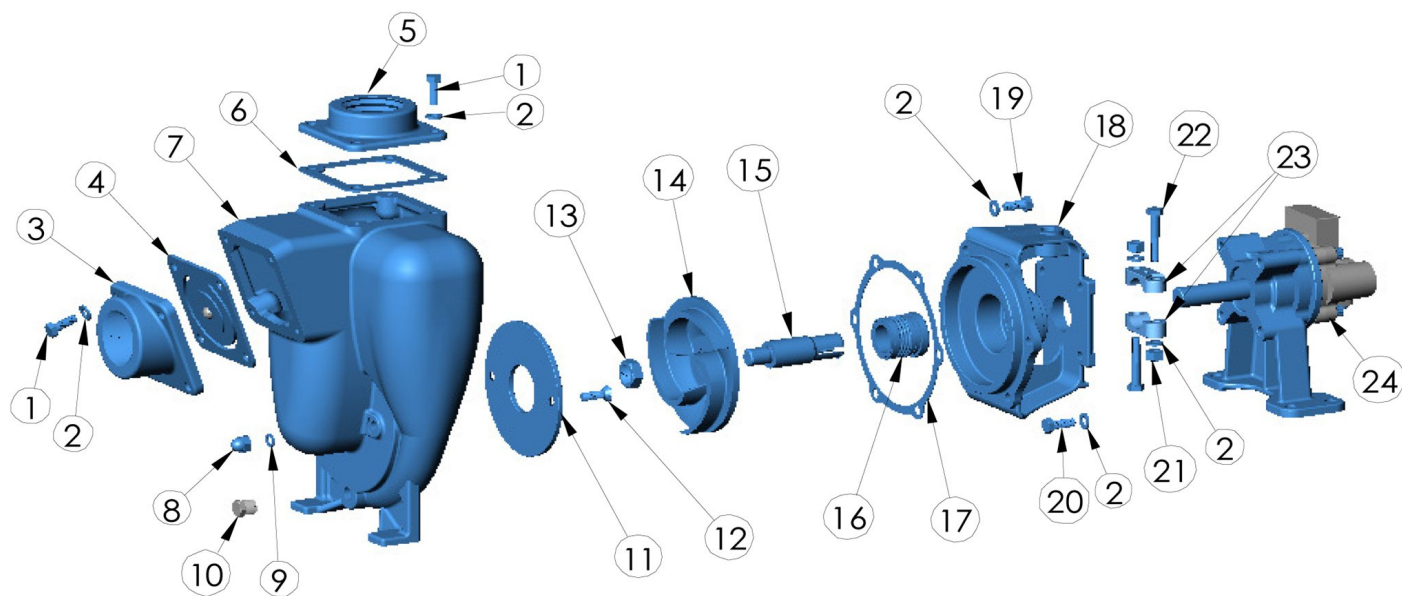
| OIL FLOW | SHUT OFF<br>0 GPM | 10<br>GPM | 25<br>GPM | 40<br>GPM | 55<br>GPM | 70<br>GPM | 85<br>GPM | 100<br>GPM | 115<br>GPM | 130<br>GPM | 145<br>GPM | MAX. HYD. OIL<br>PRESS.REQ. |
|----------|-------------------|-----------|-----------|-----------|-----------|-----------|-----------|------------|------------|------------|------------|-----------------------------|
| 6 GPM    | 28                | 27        | 24        | 22        | 19        | 16        | 14        | 11         | 8          | 4          |            | 720                         |
| 8 GPM    | 49                | 47        | 44        | 42        | 37        | 34        | 31        | 27         | 23         | 19         | 15         | 1200                        |
| 10 GPM   | 77                | 75        | 71        | 67        | 64        | 59        | 55        | 50         | 46         | 41         | 36         | 1650                        |

CN 7089-S



34800 BENNETT - FRASER, MI 48026-1686  
 (586) 293-8240 - FAX (586) 293-8469  
 (800) 563-8006 - www.mppumps.com

FLOMAX 5 HYDRAULIC



| ITEM NO. | PART NO. | DESCRIPTION                  | QTY. |   | ITEM NO. | PART NO. | DESCRIPTION                 | QTY. |
|----------|----------|------------------------------|------|---|----------|----------|-----------------------------|------|
| 1        | 21242    | CAPSCREW - 5/16"-18 X 7/8"   | 8    | * | 15       | 22286    | DRIVE SLEEVE SS - 3/4       | 1    |
| 2        | 21238    | LOCKWASHER 5/16              | 20   | * | 16       | 22273    | SEAL- VITON                 | 1    |
| 3        | 22263    | SUCTION FLANGE- 1 1/2" NPT   | 1    | * | 17       | 22255    | GASKET                      | 1    |
| 4        | 23022    | FLAPPER ASY- BUNA            | 1    |   | 18       | 22247    | ADAPTOR                     | 1    |
| 5        | 22266    | DISCHARGE FLANGE- 1 1/2" NPT | 1    |   | 19       | 24965    | CAPSCREW- 5/16"-18 X 3/4"   | 6    |
| * 6      | 22256    | GASKET- BUNA                 | 1    |   | 20       | 21278    | CAPSCREW- 5/16"-24 X .88    | 4    |
| 7        | 22251    | HOUSING- CAST IRON           | 1    |   | 21       | 21284    | HEX NUT- 5/16"-18           | 2    |
| 8        | 21237    | ACORN NUT- 5/16"-18          | 2    |   | 22       | 21264    | CAPSCREW- 5/16"-18 X 1 3/4" | 2    |
| * 9      | 21248    | GASKET - 1/2 X 5/16 X 1/16   | 2    |   | 23       | 21946    | CLAMP- 3/4 SL               | 1    |
| * 10     | 41475    | PIPE PLUG- 1/4" NPT          | 1    |   | 24       | 35995    | .25 DISP. HYD. PEDESTAL ASY | 1    |
| * 11     | 22260    | WEAR PLATE                   | 1    |   |          | 34812    | .37 DISP. HYD. PEDESTAL ASY |      |
| 12       | 21249    | SCREW SS 5/16"-18X1          | 2    |   |          | 35996    | .45 DISP. HYD. PEDESTAL ASY |      |
| 13       | 22655    | JAM NUT- 5/8"-18             | 1    |   |          | 34813    | .58 DISP. HYD. PEDESTAL ASY |      |
| * 14     | 22293    | IMPELLER                     | 1    |   |          |          |                             |      |

\* SUGGESTED REPLACEMENT PARTS