

IMPROVED MP PUMPS, INC.

HHLF "HIGH OUTPUT"

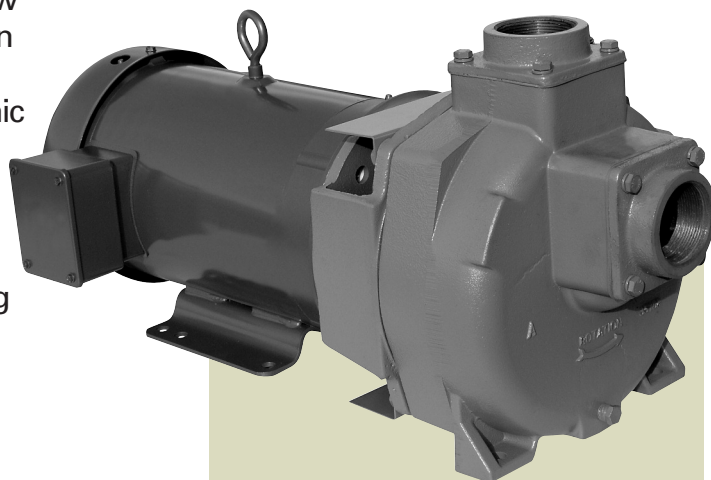
Self-Priming Centrifugal Pump



MP Pumps has extended the performance range of the current HHLF series by designing a larger (7.5" diameter) impeller and matching volute. The new impeller and volute will fit into the existing housing. An o-ring has been added to the discharge port for increased sealing at the higher pressures. Total dynamic head (TDH) has increased from 190' to 250'.

The HHLF series is available close coupled to NEMA "C" Face electric motors or as *pumpaks*. The engine drive models are capable of coupling to both gasoline and diesel engines with 1" keyed drive shafts. Pedestal mounted pumps are also available.

The volute and impeller are removable and easily replaced.



SPECIFICATIONS:

Suction and Discharge . . . 2" x 2" NPT	
Housing	Cast Iron Class 30 or Silicon Bronze CA 875
Volute	Silicon Bronze CA 875
Impeller	Silicon Bronze CA 875
Adaptor	Cast Iron Class 30 or Silicon Bronze CA 875
Drive Sleeve	304 Stainless Steel
Seal, Type 21	Carbon/Ceramic/Viton Optional Seals Available
Fasteners	Stainless Steel

MOUNTING OPTIONS:

- Close Cpld to NEMA "C" Face Motor Frame
- Pumpak
- Engine Drive
- Pedestal
- Hydraulic Drive

FLOWS TO 150 GPM

PRESSURES TO 250 TDH

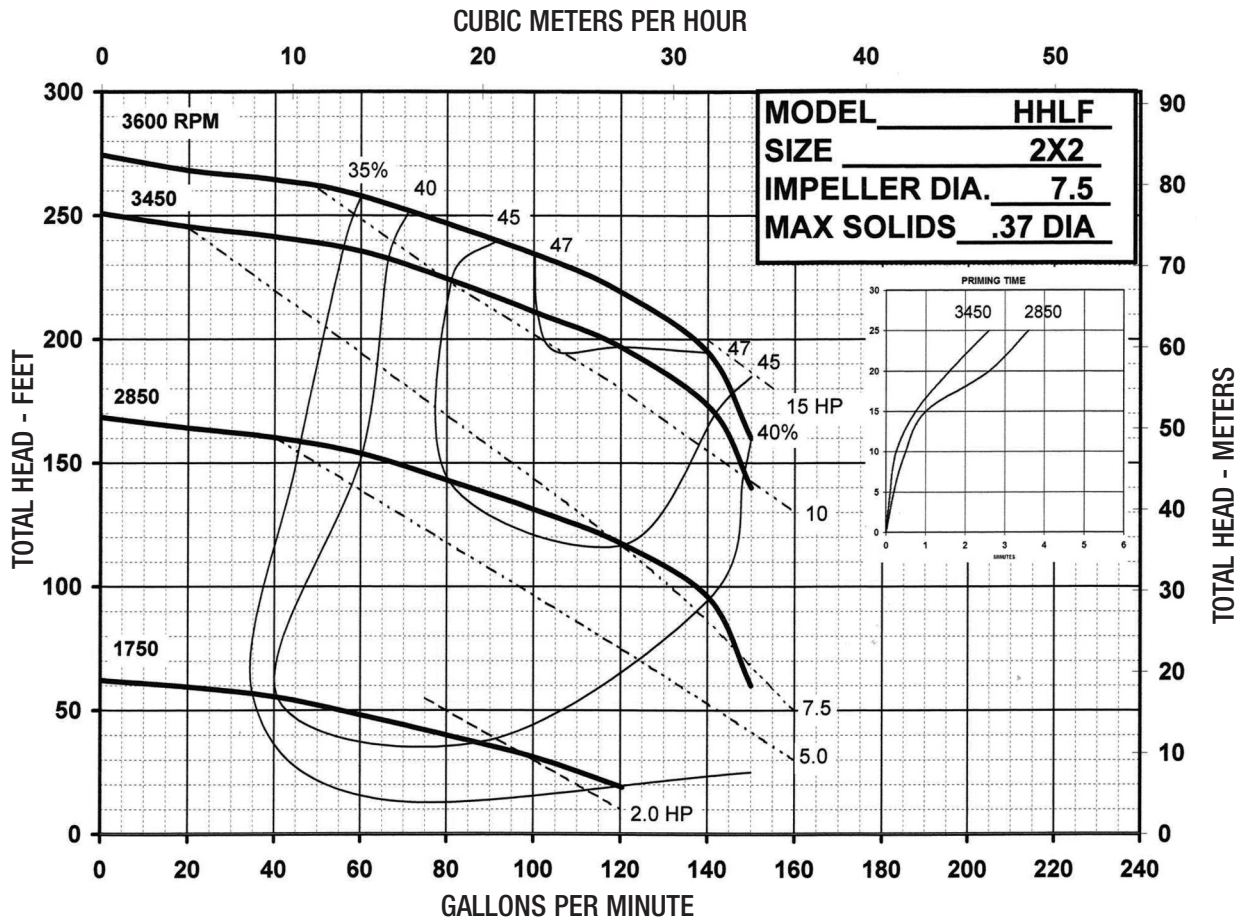
APPLICATION:

- Marine
- Agricultural
- Industrial

ABS TYPE APPROVED

46 CFR COMPLIANT

HHLF



34800 BENNETT • FRASER, MI 48026-1686
 (586) 293-8240 • FAX (586) 293-8469
 (800) 563-8006 • www.mppumps.com