



FLOMAX 5 and 8 Double Seal

Double Seal, Self Priming, Centrifugal Pump

MP Pumps has redesigned its Double Seal Flomax pumps to provide a more robust and compact design. The patent pending design has relocated the barrier fluid accumulator onto the body of the pump creating a more compact footprint, eliminating external plumbing connections for the grease fitting cartridge resulting in decreased system costs and greater pump reliability. The barrier fluid accumulator pressurizes the seal cavity to a higher pressure thus eliminating the possibility of the process fluid being transferred to enter the seal chamber. The constant presence of the barrier fluid allows the pump to operate in a dry run condition for increased hours of running and makes them ideal for handling abrasive fluids. These pump types have proven success in various hard-to-handle applications including tank unloading, machine chip conveying, and bentonite handling in horizontal drilling applications.



SPECIFICATIONS:

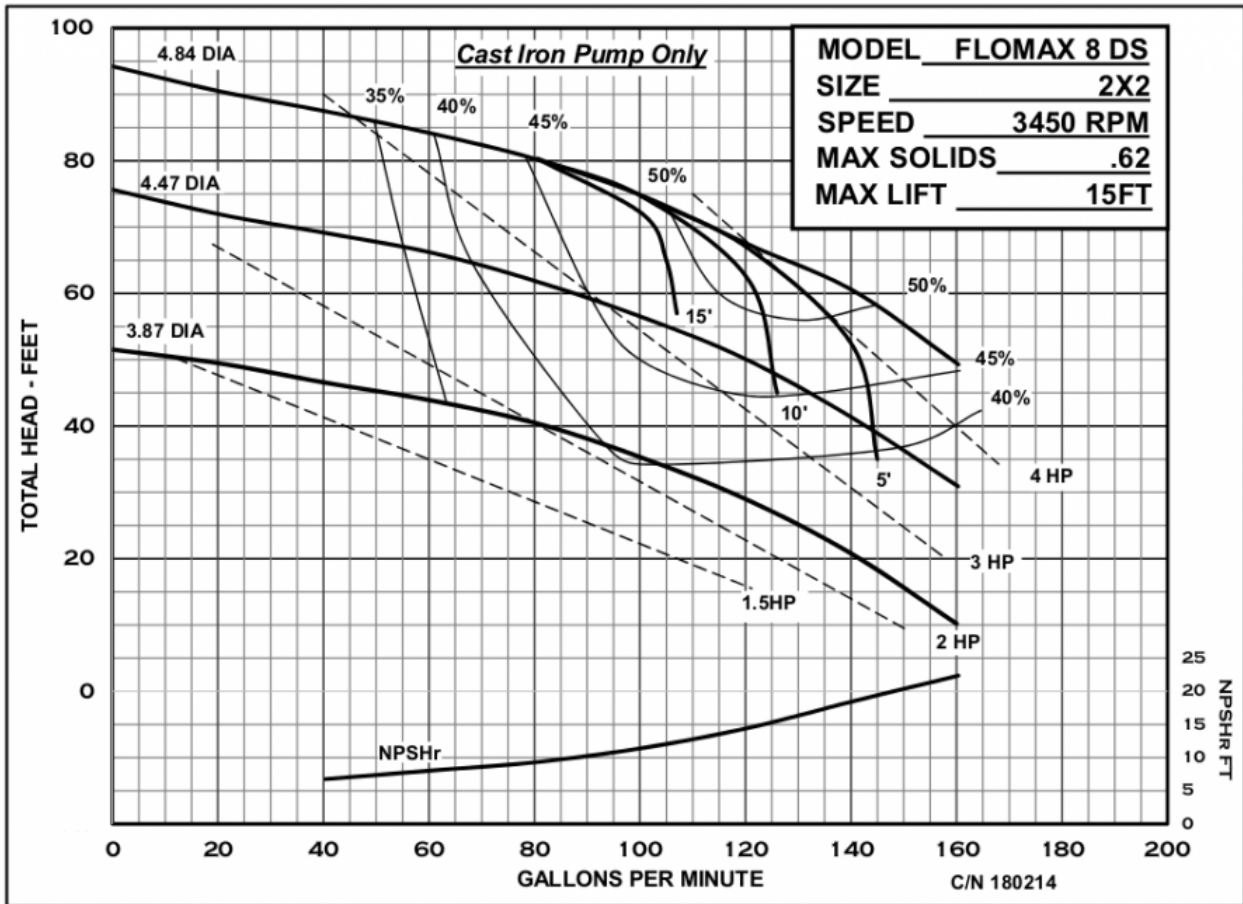
Flow	To 170 GPM
Impeller	Cast Iron, Semi-open, Balanced
Seal	Type 31, Silicon Carbide vs. Silicon Carbide (Inboard)
Mounting Options	Electric Motor-145TC, Electric Motor-56C, Engine, Pedestal, PumPak®
Port Sizes	Flomax 5: 1-1/2" x 1-1/2"NPT Flomax 8: 2"x 2" NPT

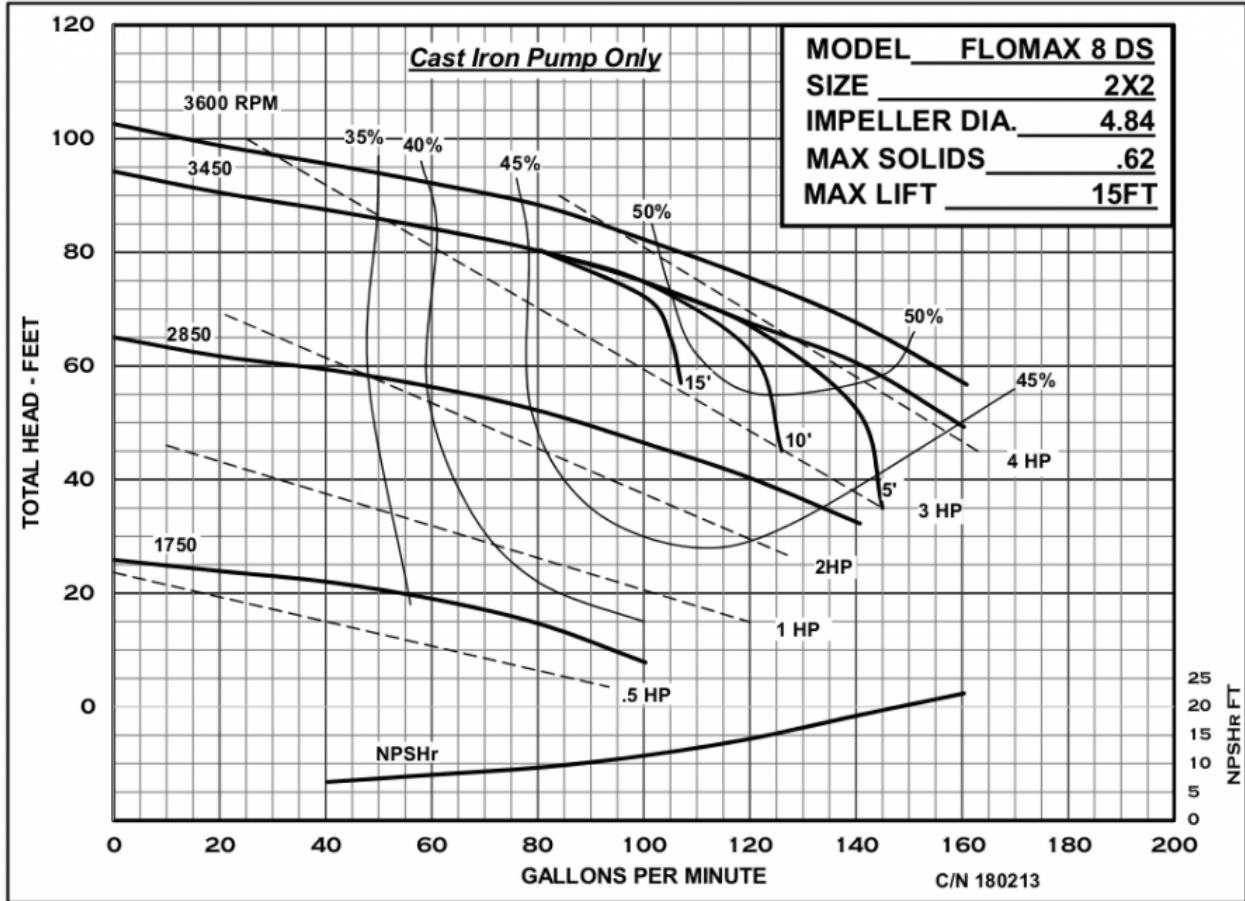
Application

- Agricultural
- Industrial
- OEM



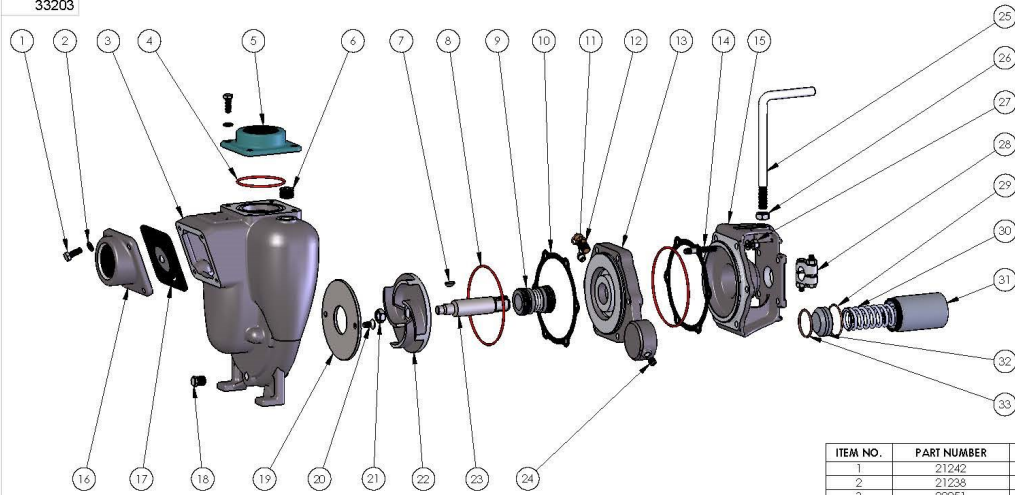
34800 BENNETT - FRASER, MI 48026-1686
(586) 293-8240 - FAX (586) 293-8469
(800) 563-8006 - www.mppumps.com





FLOMAX 5 and 8 Double Seal

DRAWING NO.
33203



ITEM NO.	PART NUMBER	DESCRIPTION	MATERIAL	QTY.
1	21242	CAP SCREW HH 5/16-18 X 7/8	304 STAINLESS STEEL	8
2	21238	LOCKWASHER 5/16 X 18	304 STAINLESS STEEL	14
3	22251	HOUSING	CAST IRON	1
4	37141	O-RING AS-568-151	VITON	1
5	22311	DISCHARGE FLANGE	CAST IRON	1
6	37140	PIPE PLUG 1/2" NPT	STEEL ZINC PLATED	1
7	21163	WOODRUFF KEY 5/8x5/32	304 STAINLESS STEEL	1
8	34555	O-RING AS-568-158	VITON	2
9	33176	SEAL ASSY: 1" DBL	SIL/SIL	1
10	22255	GASKET	LEXIDE NI-2085	2
11	22208	ZERK FITTING 1/8" NPT	STEEL ZINC PLATED	1
12	31733	RELIEF VALVE 1/4" NPT	BRASS	1
13	38356	ADP MACH DS	CAST IRON	1
14	33201	STUD 5/16-18X2.13	304 STAINLESS STEEL	6
15	22247	ADAPTOR	CAST IRON	1
16	22287	SUCTION FLANGE 2"	CAST IRON	1
17	23022	FLAPPER ASY	NITRILE	1
18	41475	PIPE PLUG: 1/4" NPT	STEEL	1
19	22240	WEAR PLATE	STEEL	1
20	37137	SCREW FHS 5/16-18 X 5/8	304 STAINLESS STEEL	2
21	22421	HEX JAM NUT 1/2-20	304 STAINLESS STEEL	1
22	28512	IMP MACH: 04L34	CAST IRON	1
23	33205	DRIVE SLSS: 3/4 FLO S SDS	303 STAINLESS STEEL	1
24	30824	PLUG 1/8" NPT	STEEL	1
25	21938	HANDLE	STEEL	1
26	22637	HEX JAM NUT 1/2-13	STEEL	1
27	21284	HEX NUT: 5/16-18X1/2X17/64	304 STAINLESS STEEL	6
28	23002	CLAMP ASY	303 STAINLESS STEEL	1
29	38343	O-RING AS-566-032	VITON	1
30	38358	SPRING	MUSIC WIRE	1
31	38361	RESERVOIR	ALUMINUM T-3 2011	1
32	38360	PISTON	ALUMINUM T-3 2011	1
33	38362	O-RING AS-566-129	VITON	1

NOTE: THIS DRAWING OR PRINT, PROPERTY OF MP PUMPS, INC. CONTAINS PROPRIETARY AND CONFIDENTIAL INFORMATION. IT SHALL BE USED ONLY AS APPROVED BY MP PUMPS AND SHALL NOT BE GIVEN TO OTHERS OR COPIED, REPRODUCED, REPRODUCED, OR OTHERWISE USED WITHOUT THE WRITTEN CONSENT OF MP PUMPS. RETURN TO MP PUMPS PROMPTLY WHEN REQUESTED.

G		UNLESS OTHERWISE NOTED THIRD ANGLE PROJECTION		MP PUMPS, INC.	
F				FRASER, MICHIGAN 48026, U.S.A.	
E				MATERIAL	
D				DRAWN BY DATE CORR. APPROV. SCALE (ORDER) (ASSEMBLY)	
C				DO NOT SCALE	
B				DRAWING NO. 33203	
A		S. O. ADDED TO DRAWING SF 6/4/14 DO		NAME	
REV		DESCRIPTION DRAWN DATE		FM8 D.S.C. SERVICE PARTS	



34800 BENNETT - FRASER, MI 48026-1686
 (586) 293-8240 - FAX (586) 293-8469
 (800) 563-8006 - www.mppumps.com

FLOMAX 5 and 8 Double Seal