

# HY SPEED HYDRAULIC PEDESTAL



Increase your pump performance with MP's new high speed pedestal designed for long life and limited space where Hy pressures are required. Each unit mounts to 6 different MP models all with a wide range of materials of construction, elastomers and options.

Features include:

- Rugged bearing frame design with high speed gerotor motor for continuous duty.
- Less noise than gear motors.
- Compact and easy to service.
- Compatible with all MP pumps designed for NEMA 145TC mounting.
- Rear port hydraulic connections for limited space requirements.
- SAE 8 (3/4-16 U.N.F.) ports

## MATERIALS

Shaft .....	8620 Alloy Steel
Housing .....	Cast Iron, Class 30
Motor Body .....	Aluminum
Gerotor Set .....	Sintered Steel
Bearings .....	5304 Double Row, 6305 Single, 1016 Needle
Shaft Seal .....	Buna Double-Lip



# MP PUMPS, INC.

34800 BENNETT • FRASER, MI 48026-1686  
 (586) 293-8240 • FAX (586) 293-8469  
 (800) 563-8006 • [www.mppumps.com](http://www.mppumps.com)

# HY SPEED HYDRAULIC PEDESTAL

FOR USE ON ALL MP PUMPS  
 DESIGNED FOR  
 NEMA 145TC MOUNTING

FLOMAX 5

FLOMAX 8

SERIES 60

SERIES 80

SERIES 110

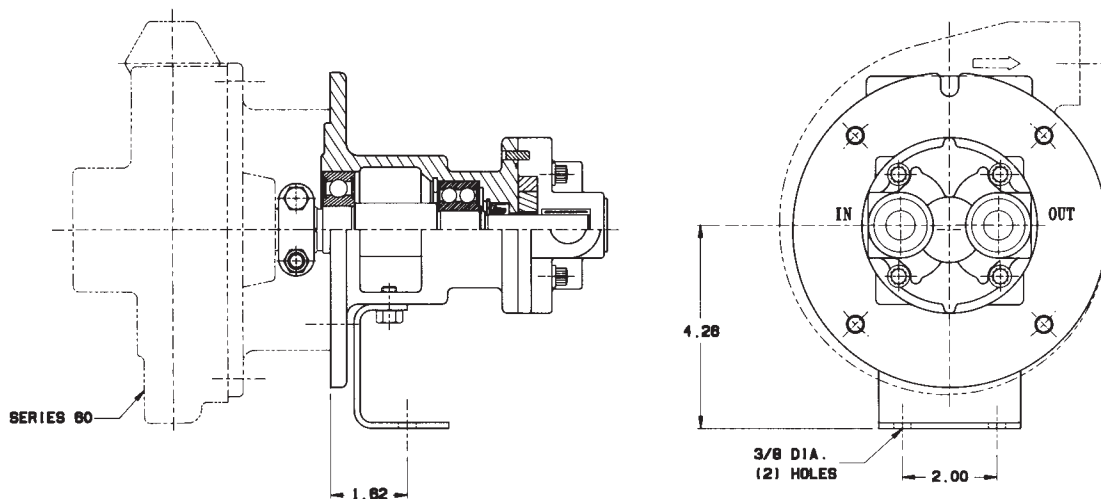
SERIES 130

GEROTOR MOTOR

SPEEDS TO 5000 RPM  
 OIL FLOWS TO 9GPM

# HY SPEED HYDRAULIC PEDESTAL

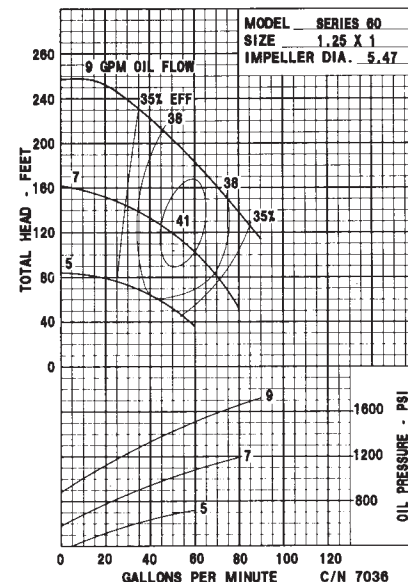
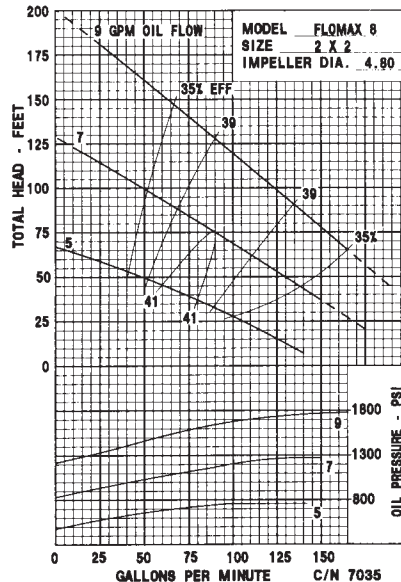
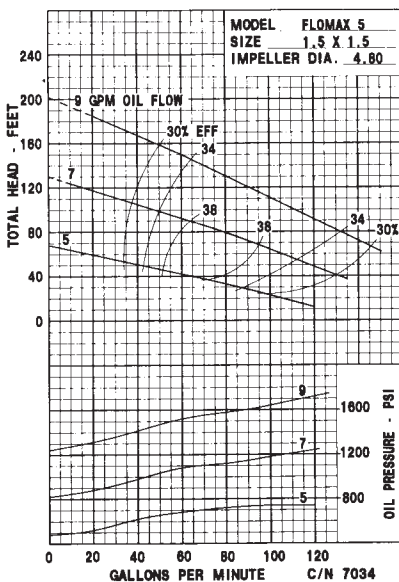
CHARACTERISTICS	SPECIFICATIONS
Rotation .....	Uni-directional, CCW from shaft end
Mounting Face .....	NEMA 145TC interchangeable
Output Shaft .....	7/8 diameter
Displacement .....	.372 cu. in. per rev.
Oil Flow .....	9 gpm max. continuous
Pressure .....	2000 psi max. continuous 2500 psi max. intermittent
Back Pressure .....	70 psi max.
Temperature .....	160°F max.
Viscosity .....	60-150 ssu
Output Power .....	8.2 hp max @ 2000 psi, 5000 rpm
Starting Torque .....	60 in.-lbs. @ 1500 psi 72 in.-lbs. @ 2000 psi



**FLOMAX 5**

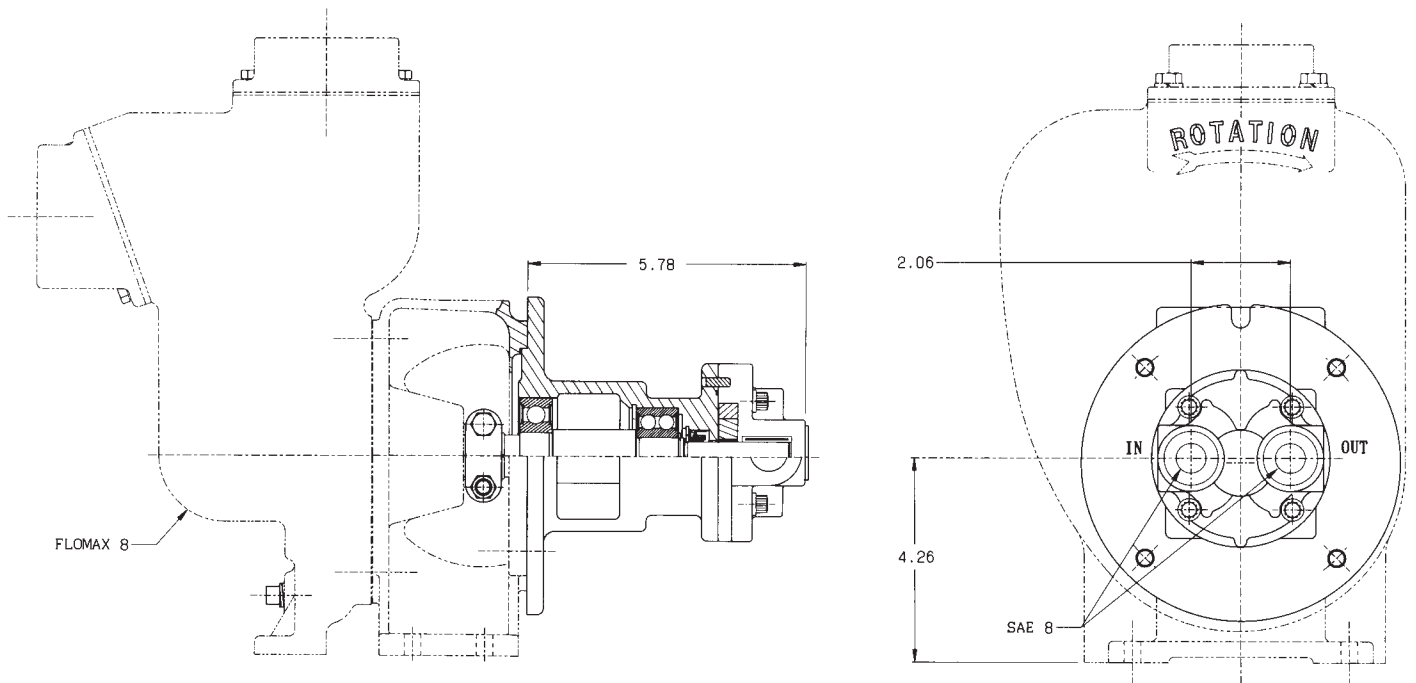
**FLOMAX 8**

**SERIES 60**

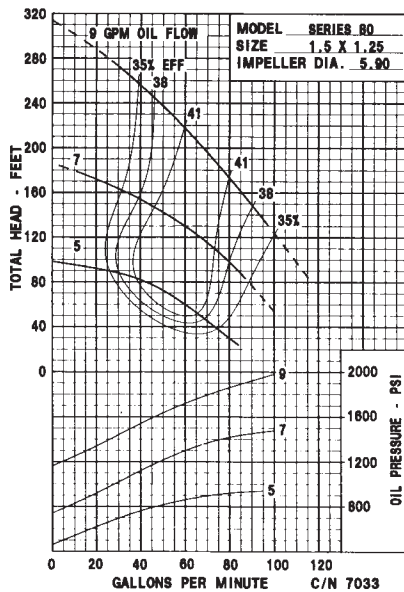


# PERFORMANCE CURVE TEST CONDITIONS

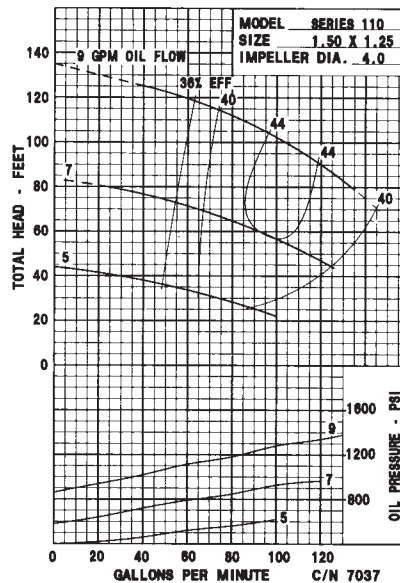
- 10 wt. industrial oil
- Oil temperature 100-120°F
- 1 foot flooded suction at pump, reduced flow rates may occur from lift suction conditions, see other static lift performance curves.
- Efficiency is combined motor and pump efficiency to show best operating conditions.
- Broken line represents intermittent duty, not intended for continuous use.
- When pumping liquids heavier than water, oil pressure must not exceed 2000 psi.



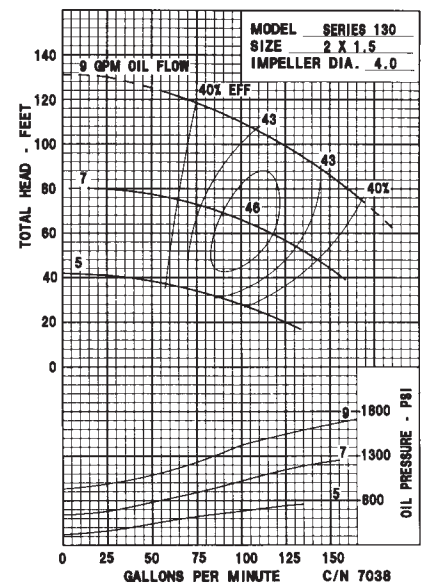
## SERIES 80



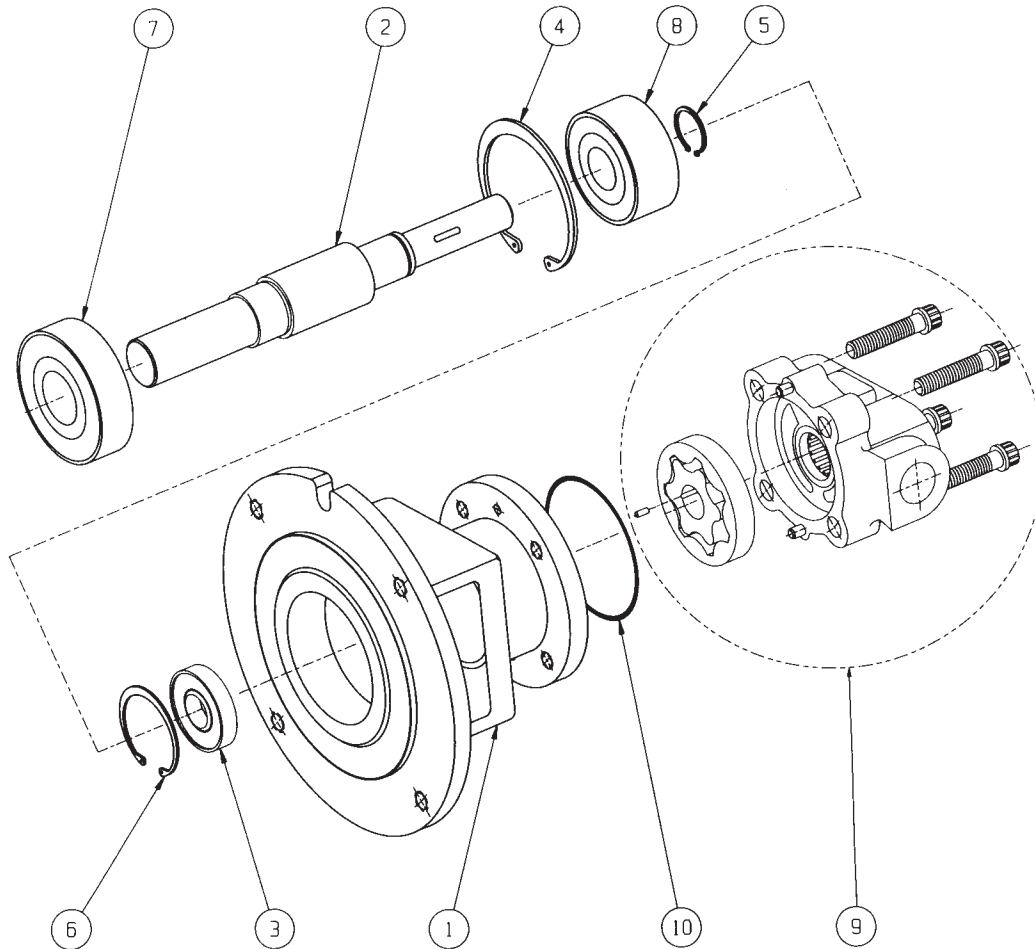
## SERIES 110



## SERIES 130



# HY SPEED HYDRAULIC PEDESTAL



ITEM	PART NO.	DESCRIPTION	QTY	ITEM	PART NO.	DESCRIPTION	QTY
<b>HIGH SPEED ASSEMBLY</b>							
	29014	HIGH SPEED ASSY. - ITEMS #1 THRU 10	1	8	29024	DOUBLE ROW BALL BEARING	1
	29139	HIGH SPEED ASSY. W/BASE (NOT SHOWN)	1	9	29138	MOTOR PARTS SERVICE	1
1	29016	BEARING HOUSING	1	10	29026	O-RING	1
2	29017	SHAFT	1	11	29022	BASE (OPTIONAL - NOT SHOWN)	1
3	29018	LIP SEAL	1	12	41239	HEX HEAD CAPSCREW	
4	29019	SNAP RING INTERNAL	1			(OPTIONAL NOT - SHOWN)	2
5	29020	SNAP RING EXTERNAL	1	13	41383	LOCKWASHER (OPTIONAL - NOT SHOWN)	2
6	29021	SNAP RING INTERNAL	1				
7	29023	SINGLE ROW BALL BEARING	1				



## MP PUMPS, INC.

34800 BENNETT • FRASER, MI 48026-1686  
 (586) 293-8240 • FAX (586) 293-8469  
 (800) 563-8006 • www.mppumps.com

CONSULT FACTORY FOR CHEMICAL COMPATIBILITY.

LITHO IN U.S.A.